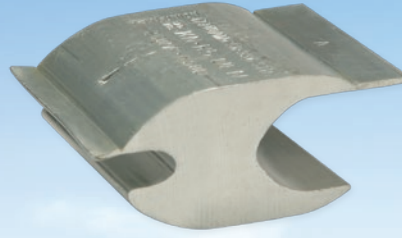
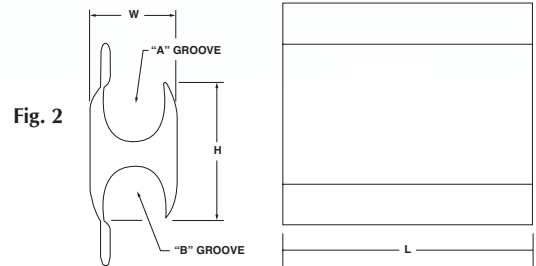
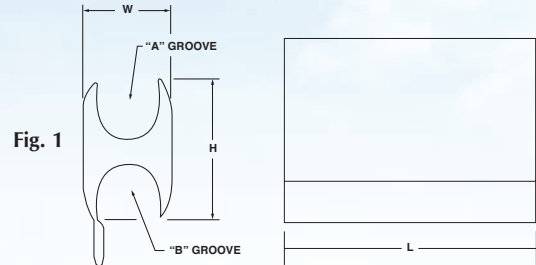


Aluminum Expanded Range Press-Ons Types KN and KN-R



- Manufactured from high conductivity aluminum
- Designed for overhead line tap applications with copper*, aluminum, ACSR, and compact conductors
- In copper to aluminum applications, H-shaped profile with solid barrier provides conductor separation, prevents strand cutting, and minimizes galvanic corrosion
- Deep indent crimp lines make crimp locations clearly visible
- Bendable tabs secure both run and tap conductors, enabling the user to easily operate installation tool
- Pre-filled with oxide inhibitor and individually boxed

*Note: Not recommended for copper to copper applications



CATALOG NUMBER	GROOVE	STANDARD CONDUCTOR			COMPRESSED CONDUCTOR		NO. OF CRIMPS (HYD.)	DIE SIZE
		ACSR* & ALUMINUM ALLOY	AL OR CU STRANDED	AL OR CU SOLID	ACSR*	STRANDED		
KN-0	A	266.8, 300, 336.4, 397.5 18/1	250, 266.8, 300, 336.4, 350, 397.5, 400	-	336 18/1, 397 18/1, 477 18/1	336, 350, 397.5, 477	2	N
	B	6, 4	6, 4, 3-7	6, 4, 3, 2	6, 4, 3	6, 4		
KN-1	A	266.8, 300, 336.4, 397.5 18/1	250, 266.8, 300, 336.4, 350, 397.5, 400	-	336 18/1, 397 18/1, 477 18/1	336, 350, 397.5, 477	2	
	B	2, 1, 1/0, 2/0	2, 1, 1/0, 2/0	1, 1/0, 2/0, 3/0	2, 1, 1/0, 2/0	1, 1/0, 2/0, 3/0		
KN-R2	A	266.8, 300, 336.4, 397.5 18/1	250, 266.8, 300, 336.4, 350, 397.5, 400	-	336 18/1, 397.5 18/1, 477 18/1	336, 350, 397.5, 477	2	
	B	2/0, 3/0, 4/0	3/0, 4/0	4/0	3/0, 4/0, 266 18/1	3/0, 4/0, 250, 266		
KN-4	A	266.8, 300, 336.4, 397.5 18/1	250, 266.8, 300, 336.4, 350, 397.5, 400	-	336 18/1, 397.5 18/1, 477 18/1	336, 350, 397.5, 477	3	
	B	336.4, 397.5 18/1	336.4, 350, 397.5, 400	-	397 18/1, 477 18/1	397, 477, 500		
KN-R5	A	300, 336.4, 397.5, 477 18/1	336.4, 350, 397.5, 400, 450, 477, 500	-	397 18/1, 477 18/1, 556 18/1	477, 500, 556	2	
	B	6, 4	6, 4, 3-7	6, 4, 3, 2	6, 4, 3	6, 4, 2		
KN-R6	A	300, 336.4, 397.5, 477 18/1	336.4, 350, 397.5, 400, 450, 477, 500	-	397 18/1, 477 18/1, 556 18/1	477, 500, 556	2	
	B	3, 2, 1, 1/0	3-3, 2, 1, 1/0, 2/0	1, 1/0, 2/0, 3/0	2, 1, 1/0, 2/0	2, 1, 1/0, 2/0, 3/0		
KN-R7	A	300, 336.4, 397.5, 477 18/1	336.4, 350, 397.5, 400, 450, 477, 500	-	397 18/1, 477 18/1, 556 18/1	477, 500, 556	2	
	B	2/0, 3/0, 4/0	3/0, 4/0	4/0	3/0, 4/0, 266 18/1	4/0, 250, 266		
KN-8	A	300, 336.4, 397.5, 477 18/1	336.4, 350, 397.5, 400, 450, 477, 500	-	397 18/1, 477 18/1, 556 18/1	477, 500, 556	3	
	B	266.8, 300, 336.4 18/1	250, 266.8, 300, 336.4, 350	-	336 18/1, 397 18/1	336, 350, 397		

*Conductor sizes listed include all strandings except where 18/1 is shown after conductor size

CATALOG NUMBER	FIG. NO.	APPROXIMATE DIMENSIONS (IN.)		
		L	W	H
KN-0	1	2.00	1.25	1.97
KN-1	1	2.00	1.25	2.00
KN-R2	2	2.00	1.25	2.00
KN-4	1	3.50	1.25	2.03

CATALOG NUMBER	FIG. NO.	APPROXIMATE DIMENSIONS (IN.)		
		L	W	H
KN-R5	2	2.00	1.25	2.00
KN-R6	2	2.00	1.25	2.00
KN-R7	2	2.00	1.25	1.97
KN-8	1	3.50	1.25	2.00